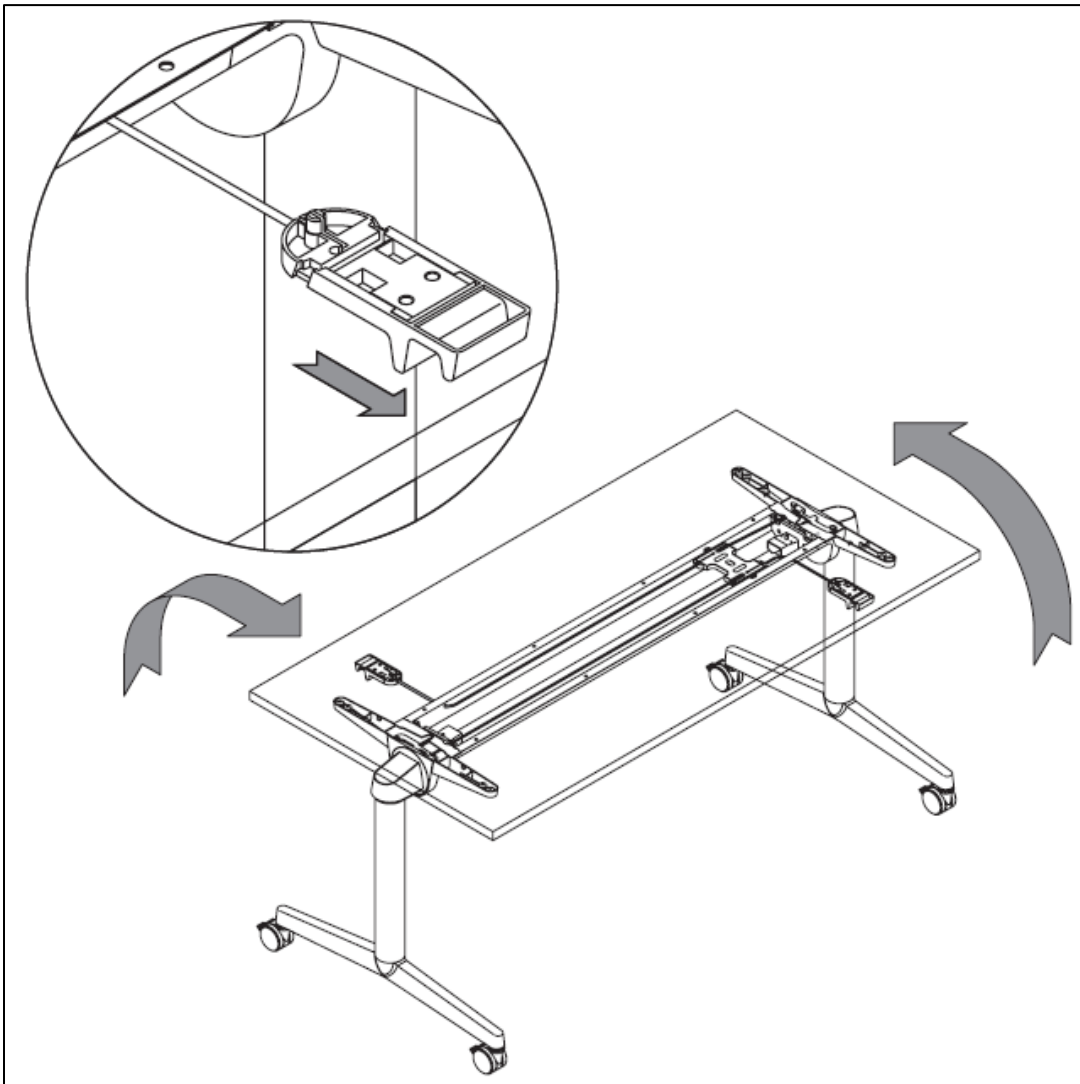


Steelcase - FlipTop Twin tables – USER MANUAL



Table flipping

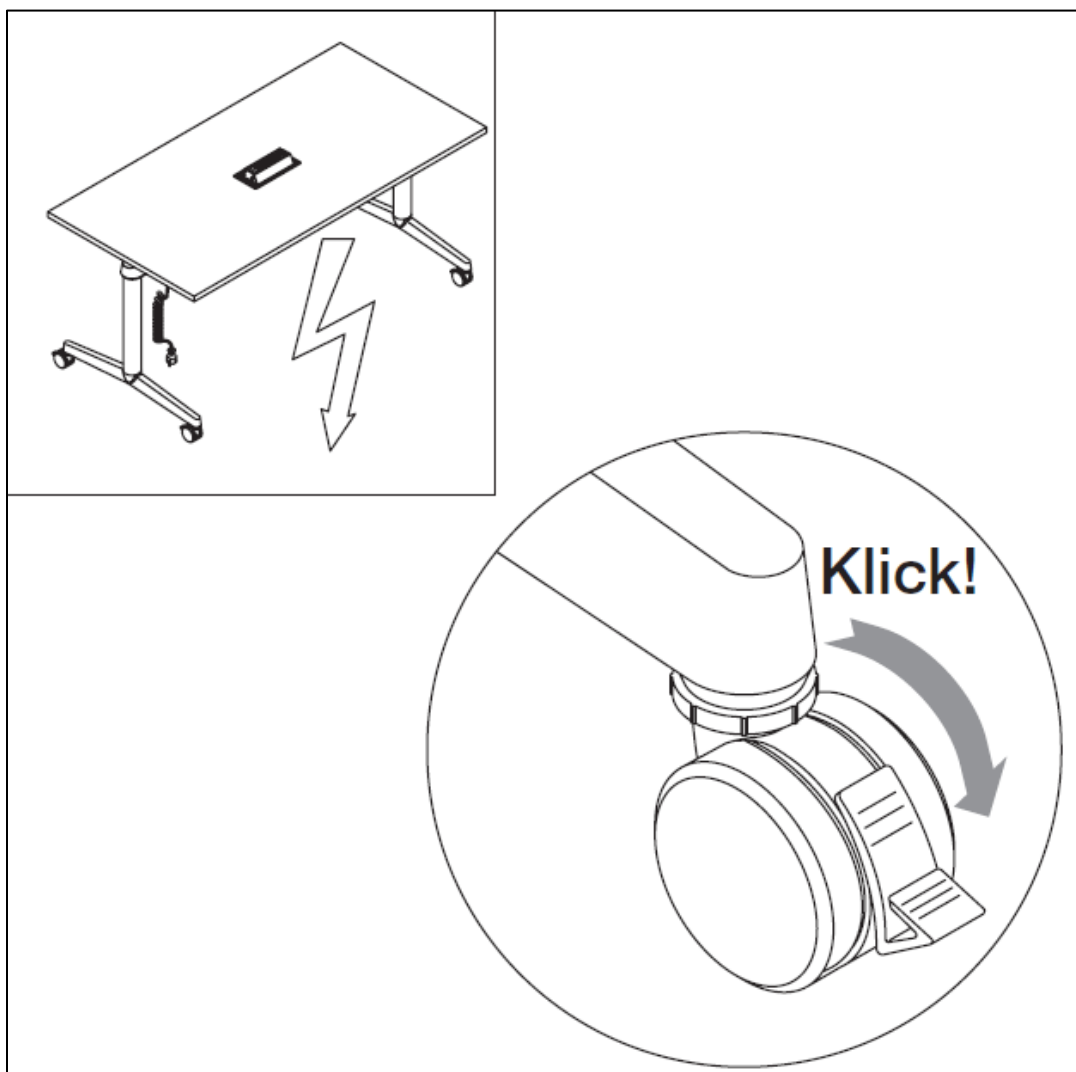
- Tool-free flipping mechanism: pull on the trigger to loosen the break (located to the right, under the table, on both sides)
- Double-sided: top can be flipped on/to both sides
- Automatically locks into parking or user position



Castors

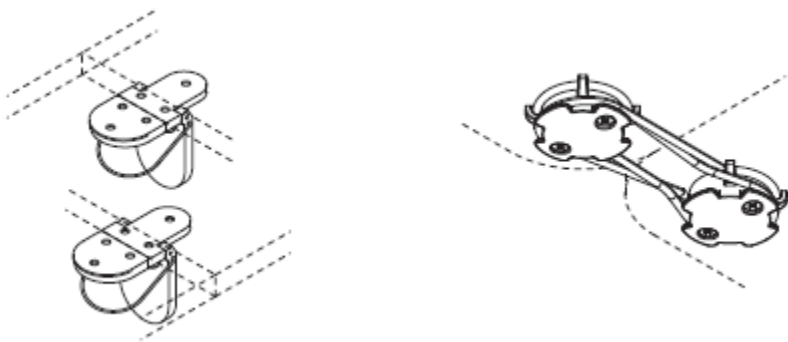
- For all types of flooring, with soft surfaces
- Height adjustment +10mm

Safety notice: When power cables are connected to other tables, it is mandatory to lock the castors



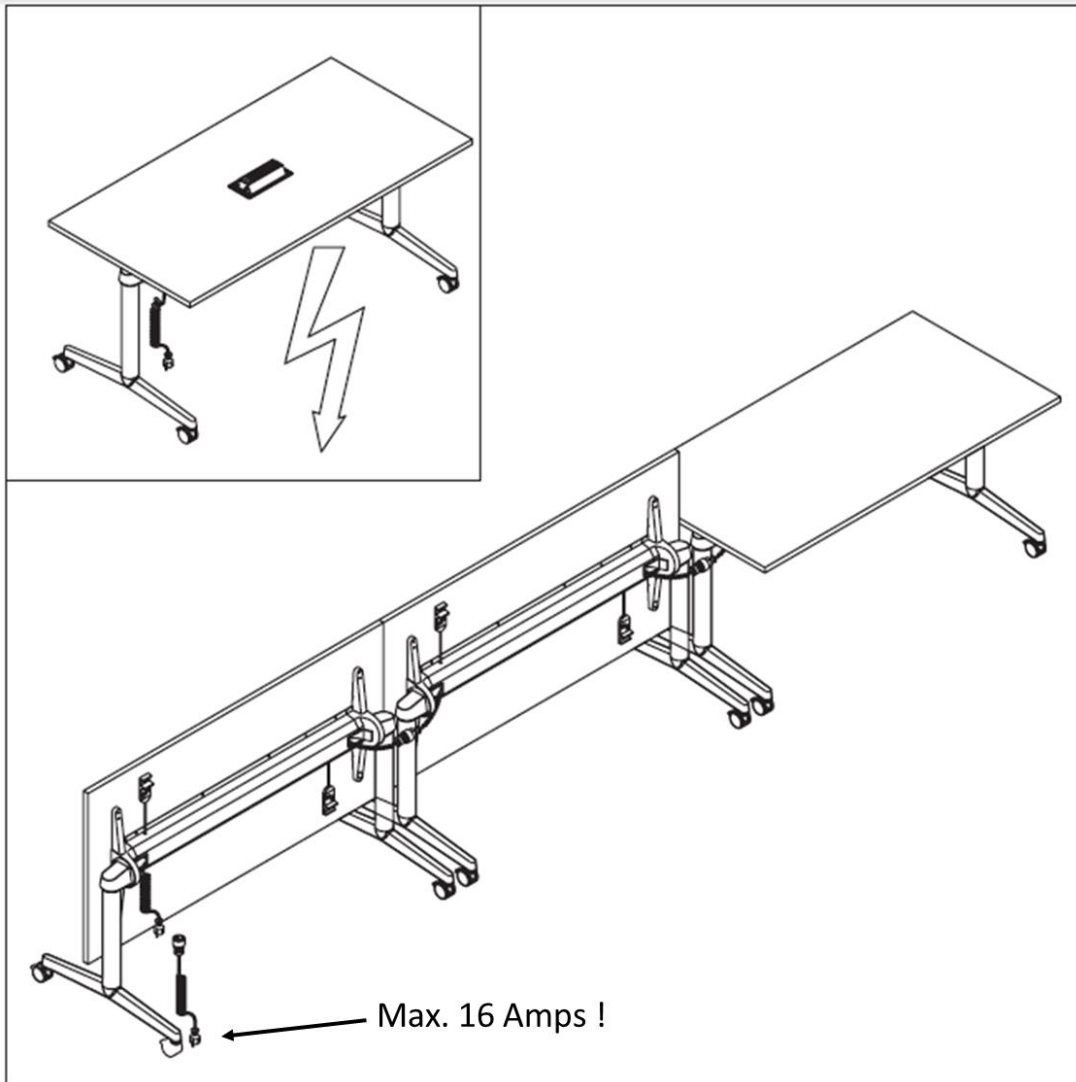
Junctions: tables can be linked to each other to stay aligned

Via top connectors (drawing on the left ; excl. for tables with soft edge) or via table connectors (drawing on the right)



Cable management

Safety notice: For power supply, no more than four triple power sockets per power cable should be connected
Power source max. 16 Amps.



Horizontal

- PowerBox option: see below
- Horizontal cable passage: concealed in cable tray

Cable tray: Double-sided access to cable passage on underside

PowerBox

- Comprises built-in housing, triple socket (UK double socket incl. fuse), power cable and connection cable (connection standard GST 18)
- For the power supply, a separate GST 18 connection standard power cable is required
- Built-in housing W280mm x D124mm, plastic PA6, centred in the middle of the table, access to triple socket, triple socket can be swivelled into cable tray
- Avoid spilling liquids onto the PowerBox.

- **To open:** Slide the release button (see blue circle below) to open the PowerBox and access the plugs – the flaps click into place for the PowerBox to remain open, as shown on the drawings on the product. The PowerBox must stay open when plugs are plugged in.
- **To close:** Remove any plugs plugged in. Release one flap and push the PowerBox down, back into the housing in the table, as shown on the drawings on the product. Click the flaps close.



Modesty panel

- Attaches to top via adapter
- Automatically locks into parking or user position

Fitting and assembly instructions and other product information are available from your Steelcase dealer.